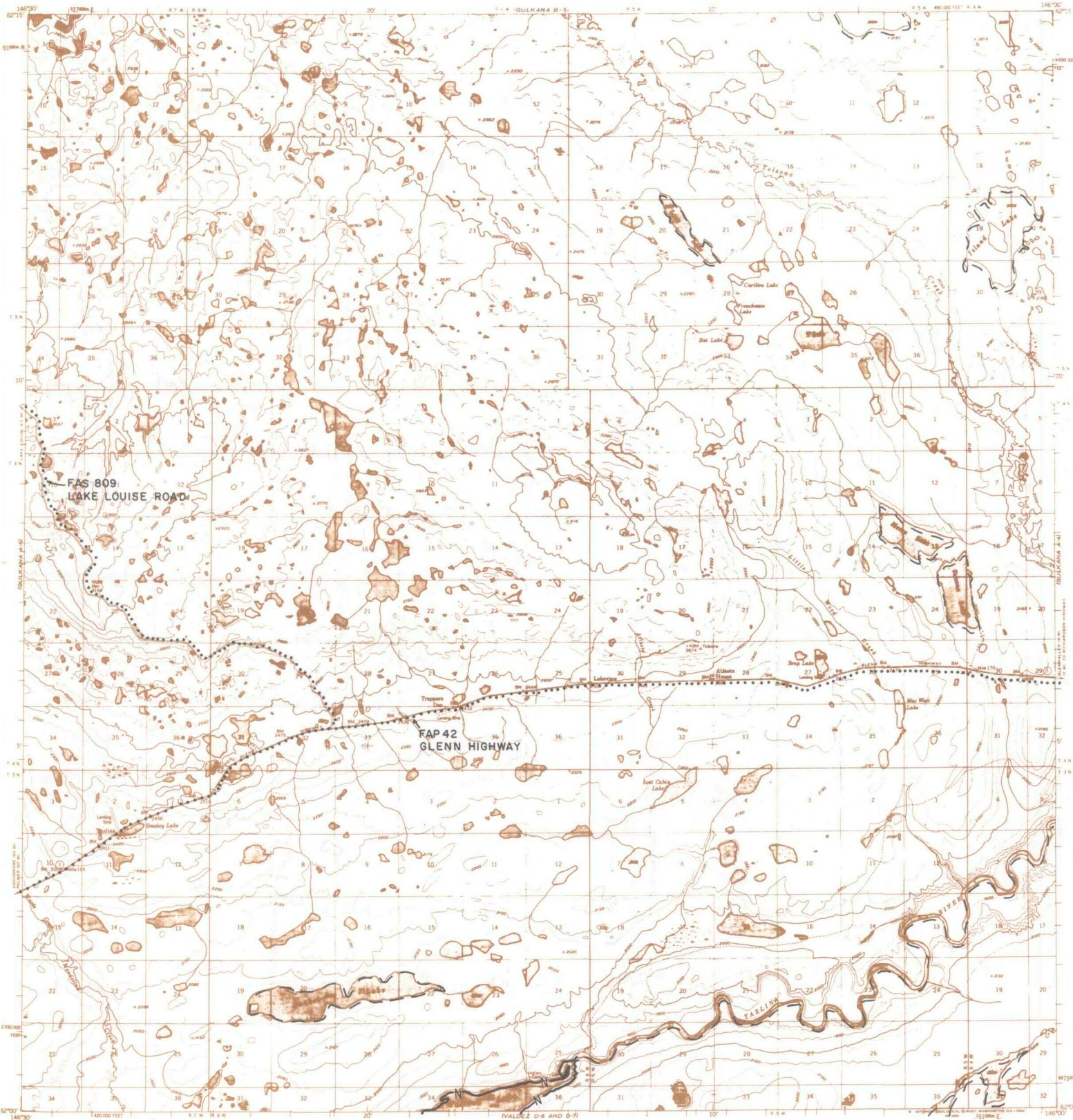


GULKANA A5



- IC OR PATENT BDY.
- WATER EXCLUSION BDY.
- FEDERALLY DETERMINED NAVIGABLE
- STATE DETERMINED NAVIGABLE
- • • • OTHER AREA BDY.
- • • EASEMENTS & ACCESS ROUTES
- △ +

0 1 2
SCALE IN MILES
June 1987



RESERVED EASEMENTS

FAP 42 Omnibus Road easement extending 150 feet on each side of the centerline of the Glenn Highway.

FAS 809 Omnibus Road easement extending 100 feet on each side of the Lake Louise Road.