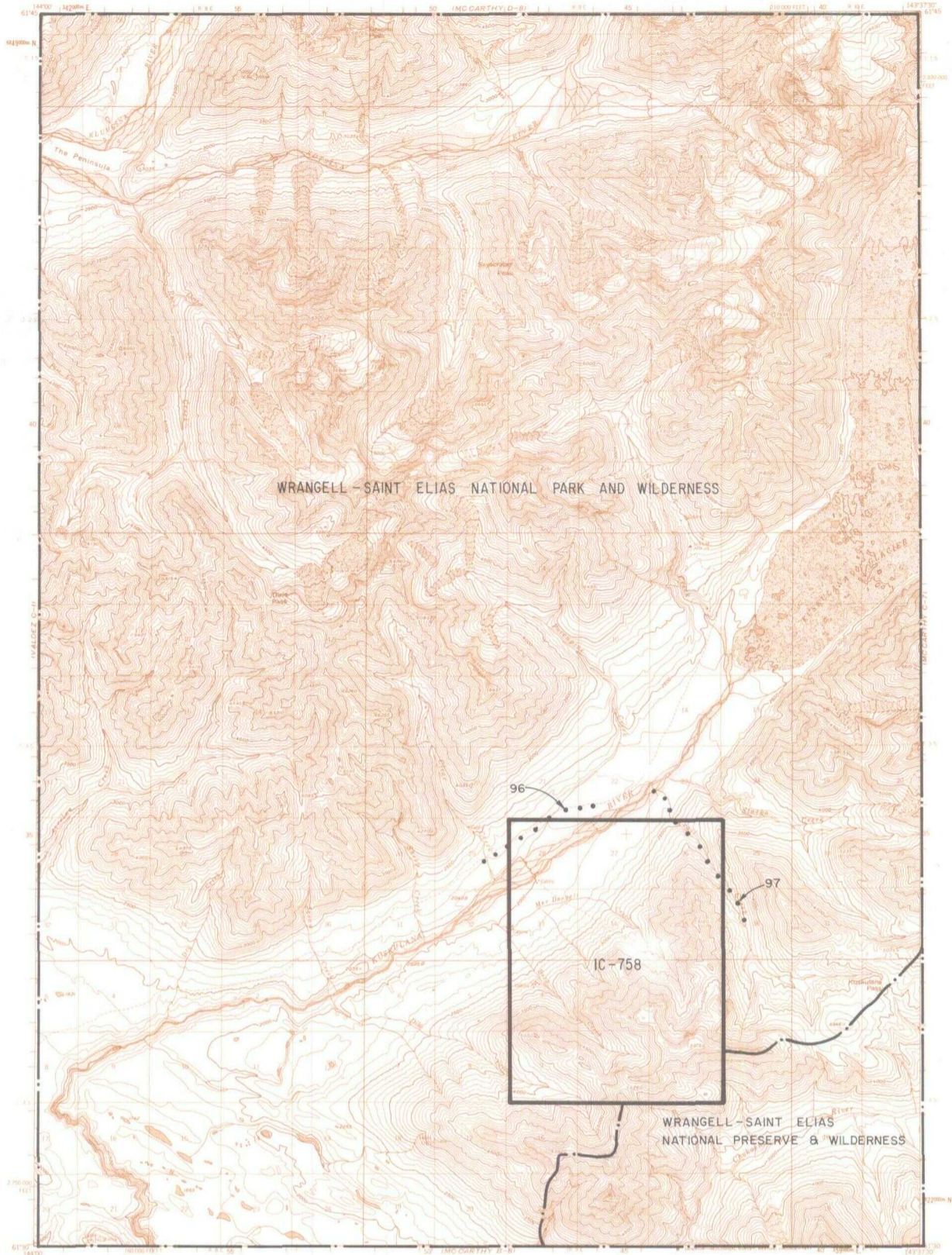
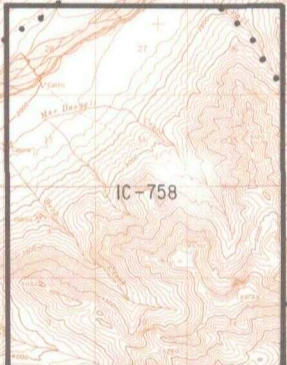


MCCARTHY C8



WRANGELL-SAINTE ELIAS NATIONAL PARK AND WILDERNESS

WRANGELL-SAINTE ELIAS NATIONAL PRESERVE & WILDERNESS



- IC OR PATENT BDY.
- WATER EXCLUSION BDY.
- FEDERALLY DETERMINED NAVIGABLE
- STATE DETERMINED NAVIGABLE
- OTHER AREA BDY.
- EASEMENTS & ACCESS ROUTES
- △ +

0 1 2  
SCALE IN MILES  
June 1987



**RESERVED EASEMENTS**

- EIN 96 An easement fifty (50) feet in width for an existing access trail traversing Sec. 28, T.3S., R.9E., C.R.M.
- EIN 97 An easement twenty-five (25) feet in width for an existing access trail paralleling Trail Creek, from its confluence with the Kuskuklana River southeasterly through Sec. 26, T.3S., R.9E., C.R.M., to public land.