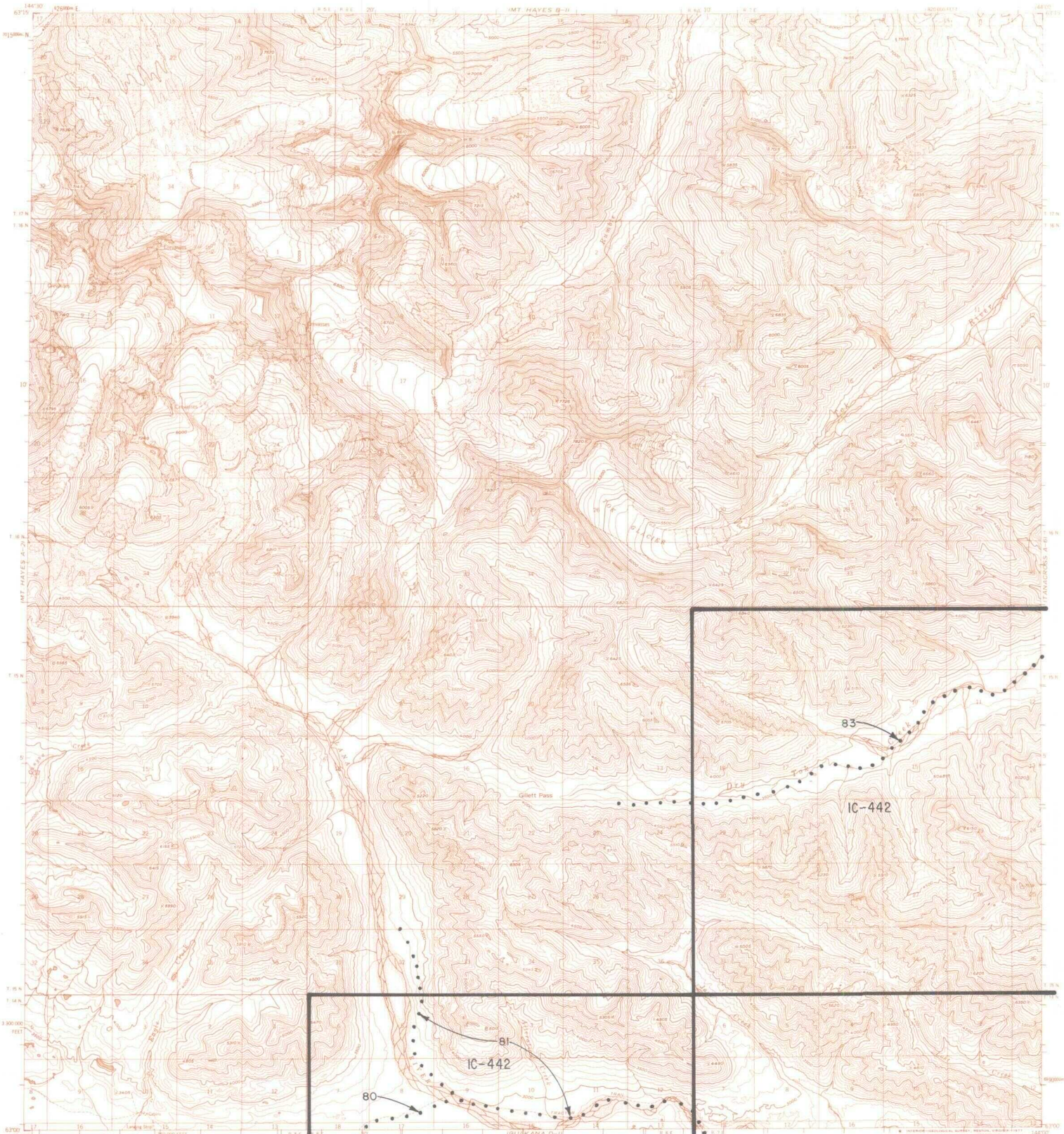
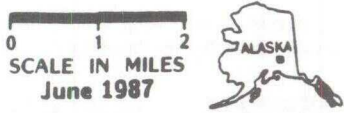


MT. HAYES A1



IC OR PATENT BDY.    
  WATER EXCLUSION BDY.    
  FEDERALLY DETERMINED NAVIGABLE    
  STATE DETERMINED NAVIGABLE    
  OTHER AREA BDY.    
  EASEMENTS & ACCESS ROUTES    
  N    
 +



**RESERVED EASEMENTS**

- EIN 80     An easement for an existing access trail, from trail EIN 81 in Sec. 9, T.14N., R.6E., Copper River Meridian, westerly to public land.
- EIN 81     An easement for an existing access trail, from Mentasta Lake village northwesterly to public land.
- EIN 83     An easement for an existing access trail, from Sec. 6, T.15N., R.8E., Copper River Meridian, westerly along Dry Tok Creek to public land.