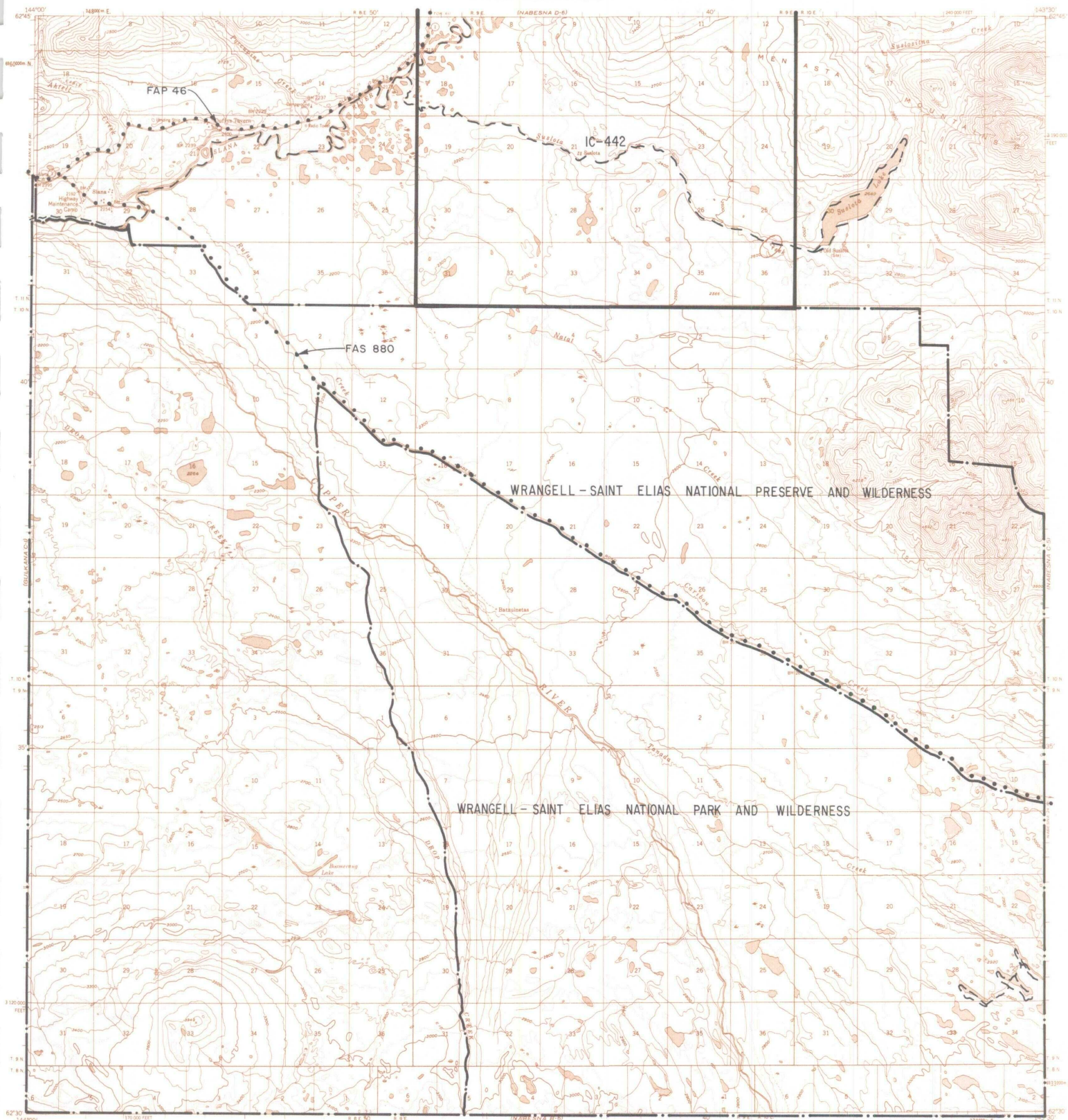


NABESNA C6



- IC OR PATENT BDY.** (thick solid line)
- FEDERALLY DETERMINED NAVIGABLE** (line with 'N' symbol)
- OTHER AREA BDY.** (dashed line)
- WATER EXCLUSION BDY.** (line with wavy pattern)
- STATE DETERMINED NAVIGABLE** (line with 'S' symbol)
- EASEMENTS & ACCESS ROUTES** (line with dots and triangle symbols)

0 1 2
SCALE IN MILES
June 1987



RESERVED EASEMENTS

FAP 46 Omnibus Road easement extending 150 feet on each side of the centerline of the Glenn Highway east of FAP 71 at Gakona.

FAS 880 Omnibus Road easement extending 100 feet on each side of the centerline of the Nabesna Road from FAP 46 to Nabesna.