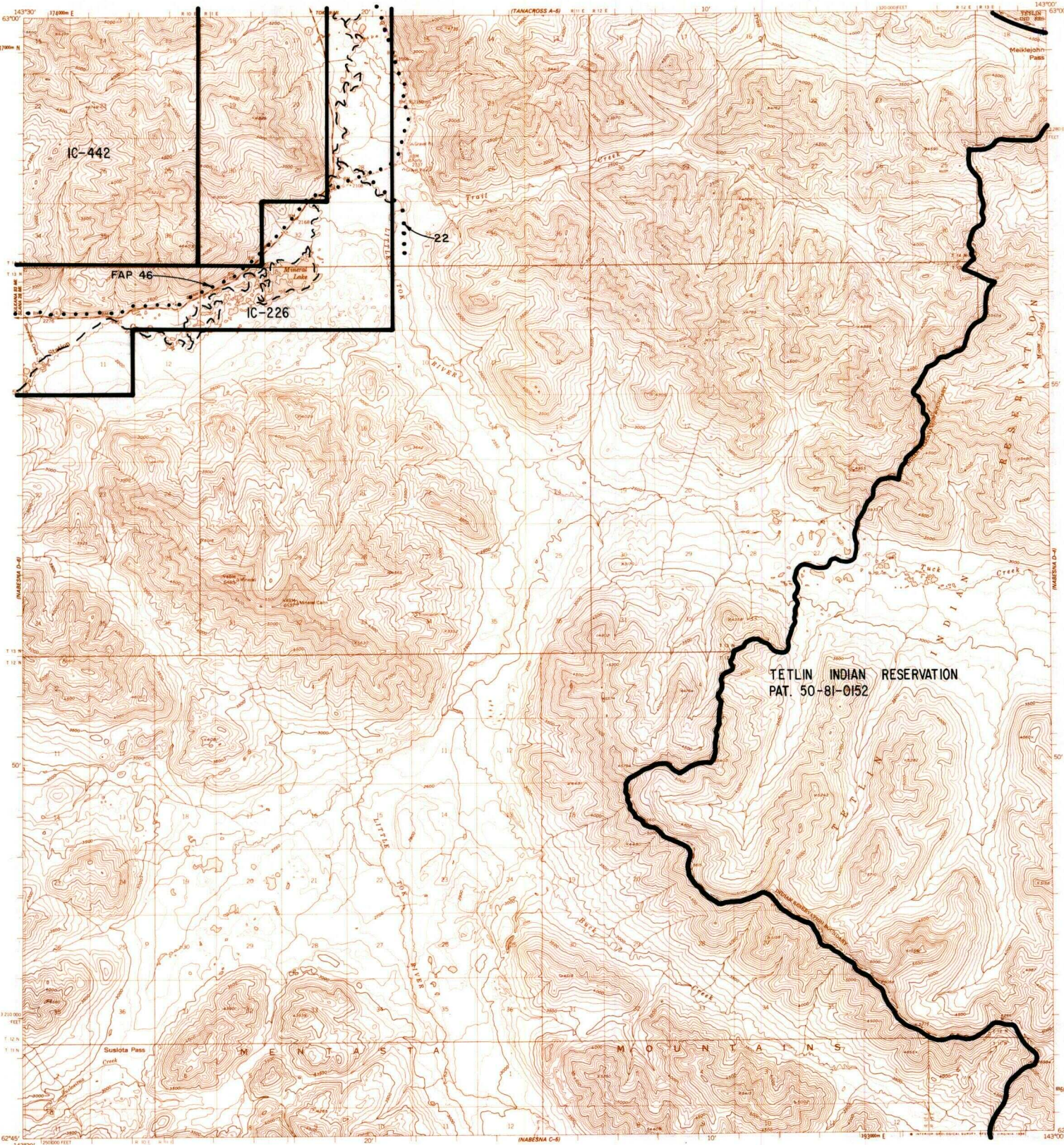


NABESNA D5



IC OR PATENT BDY.    
  FEDERALLY DETERMINED NAVIGABLE    
  OTHER AREA BDY.  
 WATER EXCLUSION BDY.    
  STATE DETERMINED NAVIGABLE    
 ● ● ● EASEMENTS & ACCESS  
△ + ROUTES

0 1 2  
 SCALE IN MILES  
 June 1987

**RESERVED EASEMENTS**

- EIN 22     An easement for an existing access trail fifty (50) feet in width from the Glenn Highway (Tok Cutoff, FAP 46) in Sec. 28, T.14N., R.11E., C.R.M., southerly paralleling the Little Tok River to public land.
- FAP 46     Omnibus Road easement extending 150 feet on each side of the centerline of the Glenn Highway east of FAP 71 at Gakona.