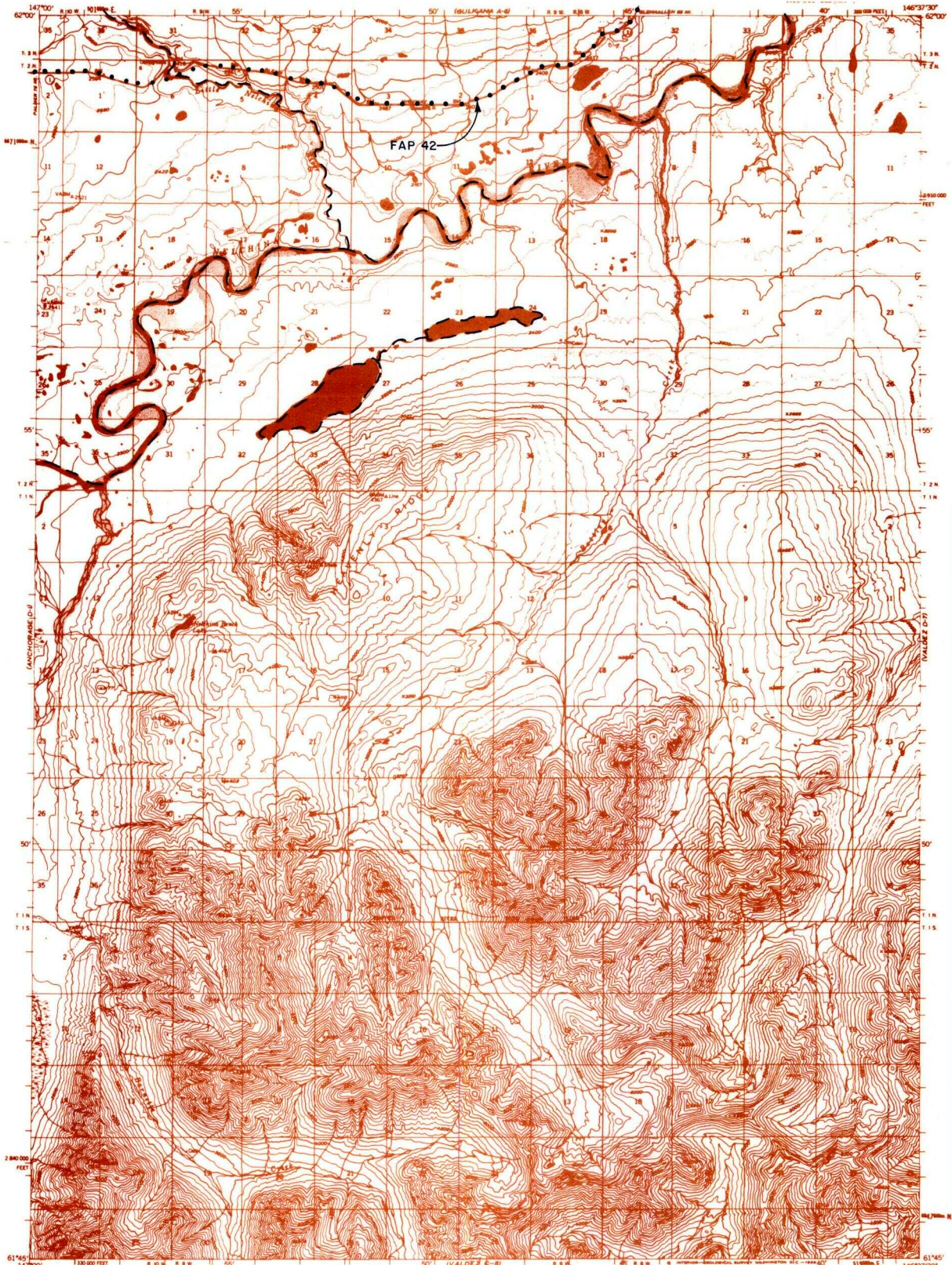


VALDEZ D8



| | | | | |
|----------------------|--------------------------------|---------------------------|---------------------------------|--|
| IC OR PATENT BDY. | FEDERALLY DETERMINED NAVIGABLE | OTHER AREA BDY. | SCALE IN MILES June 1987 | |
| WATER EXCLUSION BDY. | STATE DETERMINED NAVIGABLE | EASEMENTS & ACCESS ROUTES | | |

RESERVED EASEMENTS

FAP 42 Omnibus Road easement extending 150 feet on each side of the centerline of the Glenn Highway west of FAP 71.