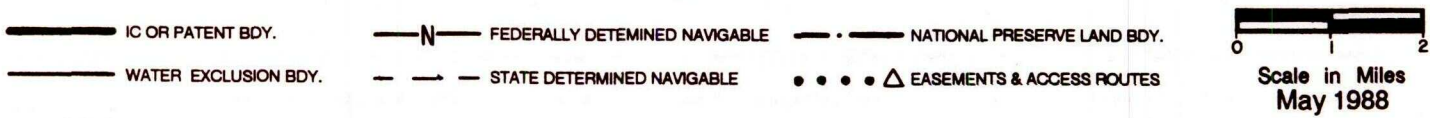
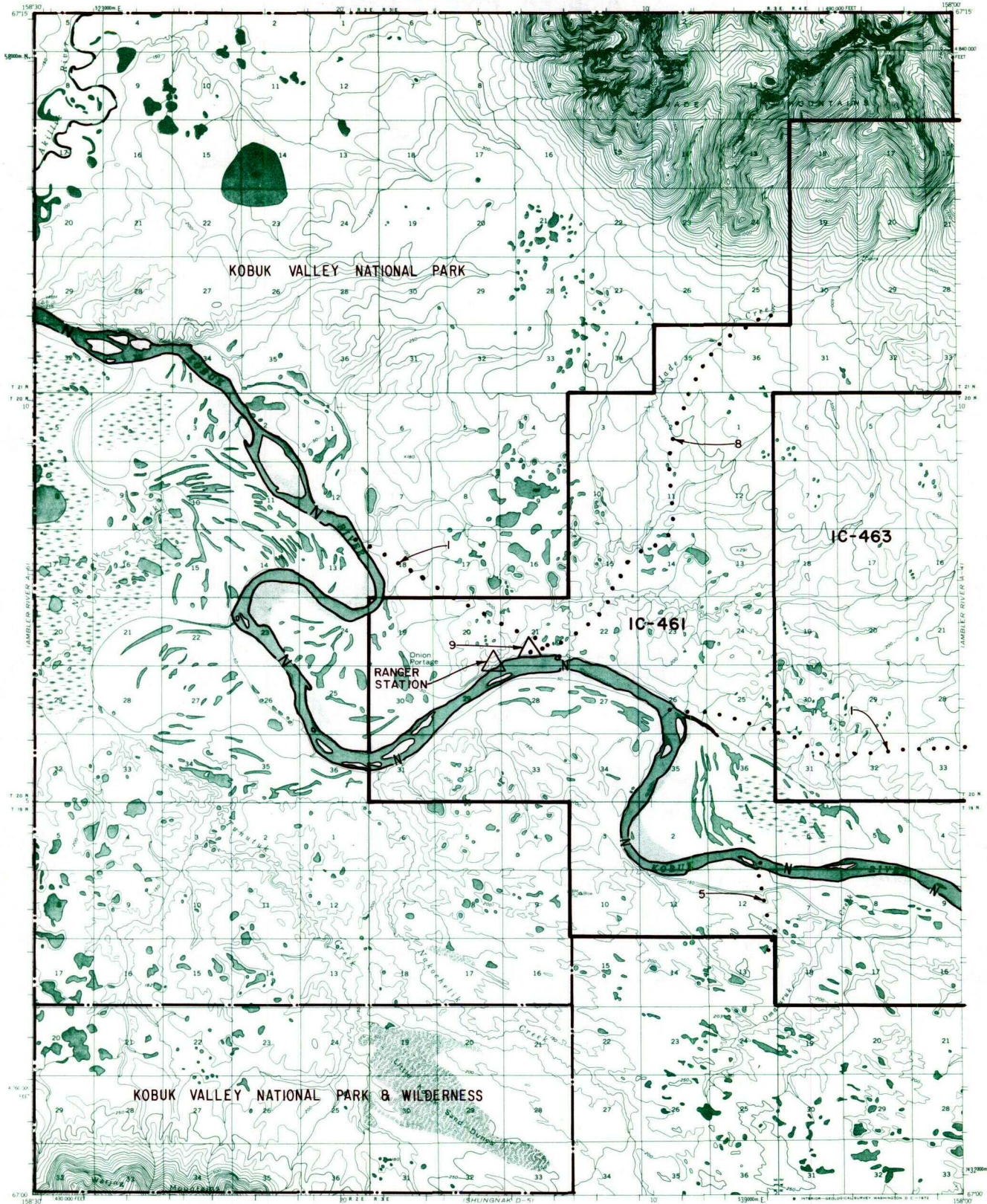


AMBLER RIVER A-5



RESERVED EASEMENTS

- EIN 1** An easement for an access trail twenty-five (25) feet in width from Section 18, T. 20 N., R. 3 E., K.R.M., southeasterly through Ambler to Shungnak and Kobuk. The uses allowed are those listed above for a twenty-five (25) foot wide trail easement. The season of use is limited to winter.

- EIN 5** An easement for an access trail twenty-five (25) feet in width from the left bank (looking downstream) of the Kobuk River in Section 12, T. 19 N., R. 3 E., K.R.M., southerly to public land.

- EIN 8** An easement for an access trail fifty (50) feet in width from Section 21, T. 20 N., R. 3 E., K.R.M., northerly to a block of public land. The winter uses allowed are those allowed for a fifty (50) foot wide trail easement. The summer uses allowed are those listed for a twenty-five (25) foot wide trail easement.

- EIN 9** A one (1) acre site easement upland of the ordinary high water mark in Section 21, T. 20 N., R. 3 E., K.R.M., on the right bank (looking downstream) of the Kobuk River.

National Park Service Ranger Station