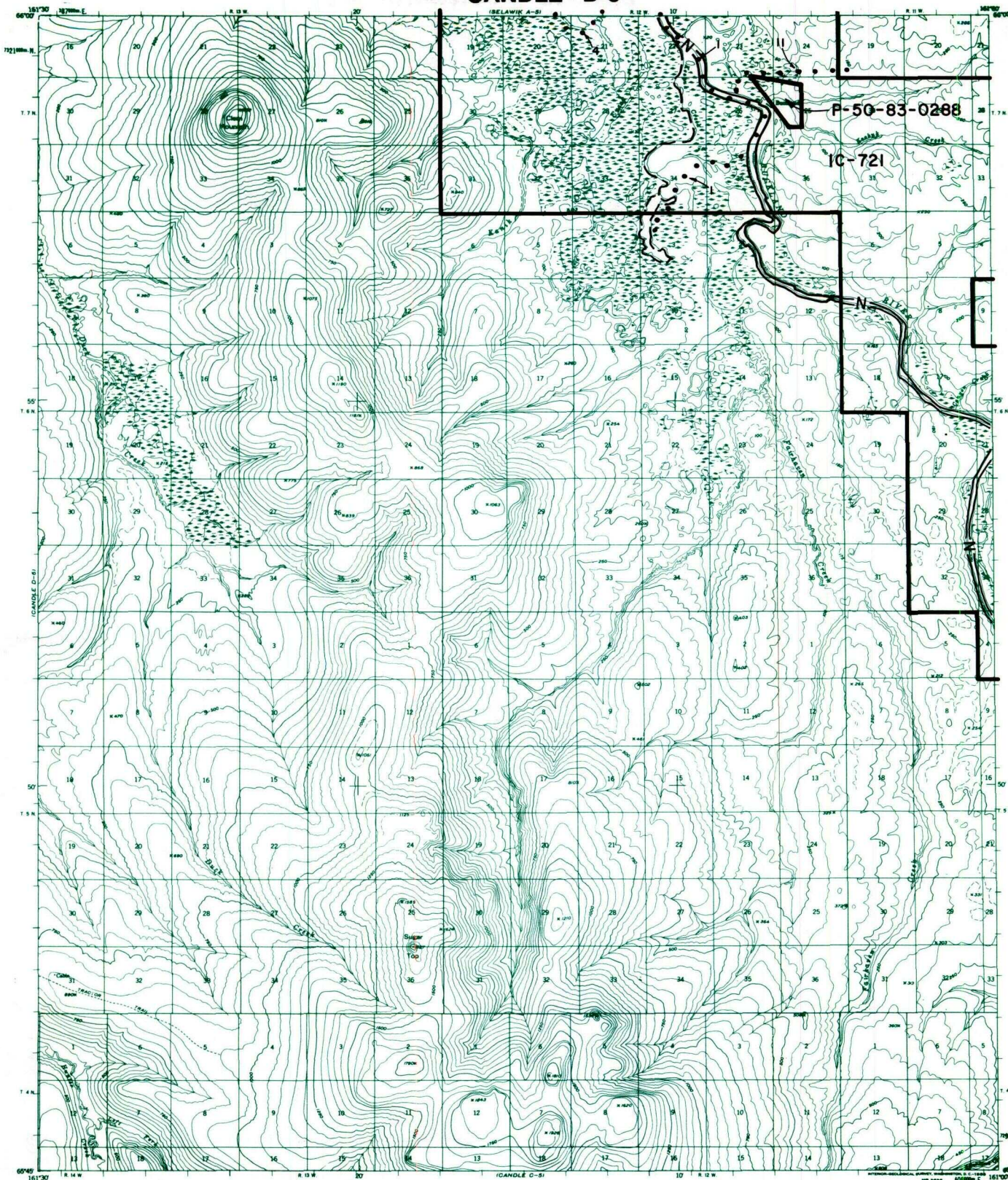


# CANDLE D-5



IC OR PATENT BDY.	FEDERALLY DETERMINED NAVIGABLE	NATIONAL PRESERVE LAND BDY.
WATER EXCLUSION BDY.	STATE DETERMINED NAVIGABLE	EASEMENTS & ACCESS ROUTES

Scale in Miles  
 May 1988

## RESERVED EASEMENTS

- EIN 1** An easement twenty-five (25) feet in width for an access trail in Section 15, T. 7 N., R. 12 W., K.R.M., southerly to public land. The season of use is limited to winter.
- EIN 4** An easement twenty-five (25) feet in width for an access trail in Section 15, T. 7 N., R. 12 W., K.R.M., westerly to public land. The season of use is limited to winter
- EIN 11** An easement twenty-five (25) feet in width for an access trail from the townsite and the Buckland River at Buckland in Section 26, T. 7 N., R. 12 W., K.R.M., easterly to public land. The season of use is limited to winter.