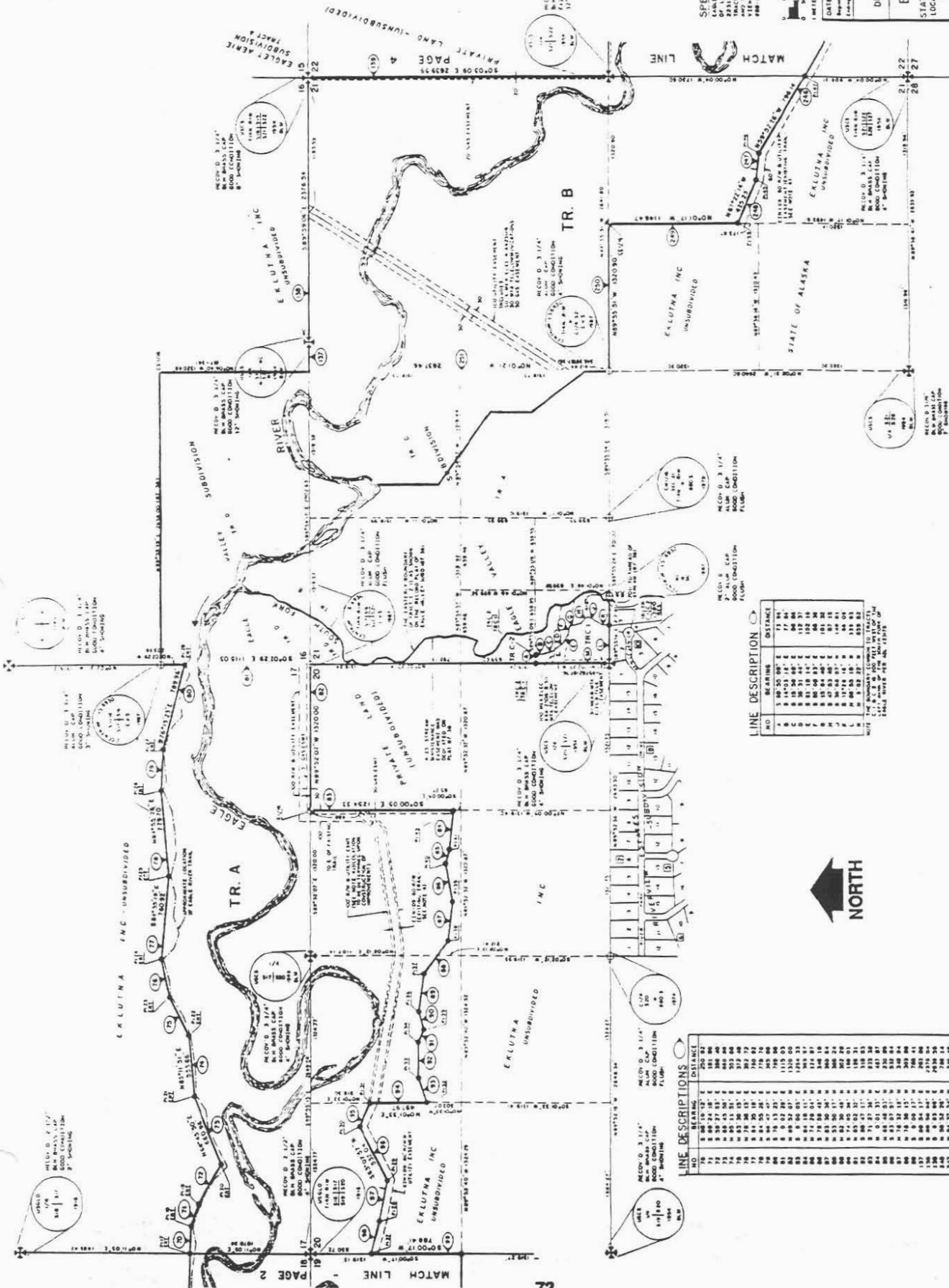


Figure 20.



SPECIAL NOTE A
 EAGLE RIVER TRACTS A, B, C, D
 AS SHOWN ON THIS SURVEY MAP
 WERE DECEASED BY STATE LAND
 ACQUISITION ACT OF 1980
 TRACT C EARL RIVER VALLEY SUBDIVISION A
 TRACT D EARL RIVER VALLEY SUBDIVISION B
 VETERAN'S LAND ACT TRACTS 1, 2, 3, 4, 5
 400-100

SCALE

1 INCH = 200 FEET

DATE OF SURVEY: 1987
 NAME OF SURVEY: EAGLE RIVER TRACTS A, B, C, D
 COUNTY: SHELBY COUNTY, ALA.
 STATE OF ALABAMA
 DIVISION OF LAND & WATER
 REGISTERED PROFESSIONAL SURVEYOR
 APPROVAL

EAGLE RIVER TRACTS
 STATE OF ALABAMA
 TRACTS A, B, C, D
 LOCATED WITHIN T14N, R18, 29W AND T14N,
 CONTAINING 3379.77 ACRES MORE
 OR LESS
 DRAWN BY: [Signature]

LINE DESCRIPTION

NO.	BEARING	DISTANCE
1	S 89° 30' 00" E	17.84
2	S 89° 30' 00" E	17.84
3	S 89° 30' 00" E	17.84
4	S 89° 30' 00" E	17.84
5	S 89° 30' 00" E	17.84
6	S 89° 30' 00" E	17.84
7	S 89° 30' 00" E	17.84
8	S 89° 30' 00" E	17.84
9	S 89° 30' 00" E	17.84
10	S 89° 30' 00" E	17.84
11	S 89° 30' 00" E	17.84
12	S 89° 30' 00" E	17.84
13	S 89° 30' 00" E	17.84
14	S 89° 30' 00" E	17.84
15	S 89° 30' 00" E	17.84
16	S 89° 30' 00" E	17.84
17	S 89° 30' 00" E	17.84
18	S 89° 30' 00" E	17.84
19	S 89° 30' 00" E	17.84
20	S 89° 30' 00" E	17.84
21	S 89° 30' 00" E	17.84
22	S 89° 30' 00" E	17.84
23	S 89° 30' 00" E	17.84
24	S 89° 30' 00" E	17.84
25	S 89° 30' 00" E	17.84
26	S 89° 30' 00" E	17.84
27	S 89° 30' 00" E	17.84
28	S 89° 30' 00" E	17.84
29	S 89° 30' 00" E	17.84
30	S 89° 30' 00" E	17.84
31	S 89° 30' 00" E	17.84
32	S 89° 30' 00" E	17.84
33	S 89° 30' 00" E	17.84
34	S 89° 30' 00" E	17.84
35	S 89° 30' 00" E	17.84
36	S 89° 30' 00" E	17.84
37	S 89° 30' 00" E	17.84
38	S 89° 30' 00" E	17.84
39	S 89° 30' 00" E	17.84
40	S 89° 30' 00" E	17.84
41	S 89° 30' 00" E	17.84
42	S 89° 30' 00" E	17.84
43	S 89° 30' 00" E	17.84
44	S 89° 30' 00" E	17.84
45	S 89° 30' 00" E	17.84
46	S 89° 30' 00" E	17.84
47	S 89° 30' 00" E	17.84
48	S 89° 30' 00" E	17.84
49	S 89° 30' 00" E	17.84
50	S 89° 30' 00" E	17.84
51	S 89° 30' 00" E	17.84
52	S 89° 30' 00" E	17.84
53	S 89° 30' 00" E	17.84
54	S 89° 30' 00" E	17.84
55	S 89° 30' 00" E	17.84
56	S 89° 30' 00" E	17.84
57	S 89° 30' 00" E	17.84
58	S 89° 30' 00" E	17.84
59	S 89° 30' 00" E	17.84
60	S 89° 30' 00" E	17.84
61	S 89° 30' 00" E	17.84
62	S 89° 30' 00" E	17.84
63	S 89° 30' 00" E	17.84
64	S 89° 30' 00" E	17.84
65	S 89° 30' 00" E	17.84
66	S 89° 30' 00" E	17.84
67	S 89° 30' 00" E	17.84
68	S 89° 30' 00" E	17.84
69	S 89° 30' 00" E	17.84
70	S 89° 30' 00" E	17.84
71	S 89° 30' 00" E	17.84
72	S 89° 30' 00" E	17.84
73	S 89° 30' 00" E	17.84
74	S 89° 30' 00" E	17.84
75	S 89° 30' 00" E	17.84
76	S 89° 30' 00" E	17.84
77	S 89° 30' 00" E	17.84
78	S 89° 30' 00" E	17.84
79	S 89° 30' 00" E	17.84
80	S 89° 30' 00" E	17.84
81	S 89° 30' 00" E	17.84
82	S 89° 30' 00" E	17.84
83	S 89° 30' 00" E	17.84
84	S 89° 30' 00" E	17.84
85	S 89° 30' 00" E	17.84
86	S 89° 30' 00" E	17.84
87	S 89° 30' 00" E	17.84
88	S 89° 30' 00" E	17.84
89	S 89° 30' 00" E	17.84
90	S 89° 30' 00" E	17.84
91	S 89° 30' 00" E	17.84
92	S 89° 30' 00" E	17.84
93	S 89° 30' 00" E	17.84
94	S 89° 30' 00" E	17.84
95	S 89° 30' 00" E	17.84
96	S 89° 30' 00" E	17.84
97	S 89° 30' 00" E	17.84
98	S 89° 30' 00" E	17.84
99	S 89° 30' 00" E	17.84
100	S 89° 30' 00" E	17.84

LINE DESCRIPTIONS

NO.	BEARING	DISTANCE
1	S 89° 30' 00" E	17.84
2	S 89° 30' 00" E	17.84
3	S 89° 30' 00" E	17.84
4	S 89° 30' 00" E	17.84
5	S 89° 30' 00" E	17.84
6	S 89° 30' 00" E	17.84
7	S 89° 30' 00" E	17.84
8	S 89° 30' 00" E	17.84
9	S 89° 30' 00" E	17.84
10	S 89° 30' 00" E	17.84
11	S 89° 30' 00" E	17.84
12	S 89° 30' 00" E	17.84
13	S 89° 30' 00" E	17.84
14	S 89° 30' 00" E	17.84
15	S 89° 30' 00" E	17.84
16	S 89° 30' 00" E	17.84
17	S 89° 30' 00" E	17.84
18	S 89° 30' 00" E	17.84
19	S 89° 30' 00" E	17.84
20	S 89° 30' 00" E	17.84
21	S 89° 30' 00" E	17.84
22	S 89° 30' 00" E	17.84
23	S 89° 30' 00" E	17.84
24	S 89° 30' 00" E	17.84
25	S 89° 30' 00" E	17.84
26	S 89° 30' 00" E	17.84
27	S 89° 30' 00" E	17.84
28	S 89° 30' 00" E	17.84
29	S 89° 30' 00" E	17.84
30	S 89° 30' 00" E	17.84
31	S 89° 30' 00" E	17.84
32	S 89° 30' 00" E	17.84
33	S 89° 30' 00" E	17.84
34	S 89° 30' 00" E	17.84
35	S 89° 30' 00" E	17.84
36	S 89° 30' 00" E	17.84
37	S 89° 30' 00" E	17.84
38	S 89° 30' 00" E	17.84
39	S 89° 30' 00" E	17.84
40	S 89° 30' 00" E	17.84
41	S 89° 30' 00" E	17.84
42	S 89° 30' 00" E	17.84
43	S 89° 30' 00" E	17.84
44	S 89° 30' 00" E	17.84
45	S 89° 30' 00" E	17.84
46	S 89° 30' 00" E	17.84
47	S 89° 30' 00" E	17.84
48	S 89° 30' 00" E	17.84
49	S 89° 30' 00" E	17.84
50	S 89° 30' 00" E	17.84
51	S 89° 30' 00" E	17.84
52	S 89° 30' 00" E	17.84
53	S 89° 30' 00" E	17.84
54	S 89° 30' 00" E	17.84
55	S 89° 30' 00" E	17.84
56	S 89° 30' 00" E	17.84
57	S 89° 30' 00" E	17.84
58	S 89° 30' 00" E	17.84
59	S 89° 30' 00" E	17.84
60	S 89° 30' 00" E	17.84
61	S 89° 30' 00" E	17.84
62	S 89° 30' 00" E	17.84
63	S 89° 30' 00" E	17.84
64	S 89° 30' 00" E	17.84
65	S 89° 30' 00" E	17.84
66	S 89° 30' 00" E	17.84
67	S 89° 30' 00" E	17.84
68	S 89° 30' 00" E	17.84
69	S 89° 30' 00" E	17.84
70	S 89° 30' 00" E	17.84
71	S 89° 30' 00" E	17.84
72	S 89° 30' 00" E	17.84
73	S 89° 30' 00" E	17.84
74	S 89° 30' 00" E	17.84
75	S 89° 30' 00" E	17.84
76	S 89° 30' 00" E	17.84
77	S 89° 30' 00" E	17.84
78	S 89° 30' 00" E	17.84
79	S 89° 30' 00" E	17.84
80	S 89° 30' 00" E	17.84
81	S 89° 30' 00" E	17.84
82	S 89° 30' 00" E	17.84
83	S 89° 30' 00" E	17.84
84	S 89° 30' 00" E	17.84
85	S 89° 30' 00" E	17.84
86	S 89° 30' 00" E	17.84
87	S 89° 30' 00" E	17.84
88	S 89° 30' 00" E	17.84
89	S 89° 30' 00" E	17.84
90	S 89° 30' 00" E	17.84
91	S 89° 30' 00" E	17.84
92	S 89° 30' 00" E	17.84
93	S 89° 30' 00" E	17.84
94	S 89° 30' 00" E	17.84
95	S 89° 30' 00" E	17.84
96	S 89° 30' 00" E	17.84
97	S 89° 30' 00" E	17.84
98	S 89° 30' 00" E	17.84
99	S 89° 30' 00" E	17.84
100	S 89° 30' 00" E	17.84

