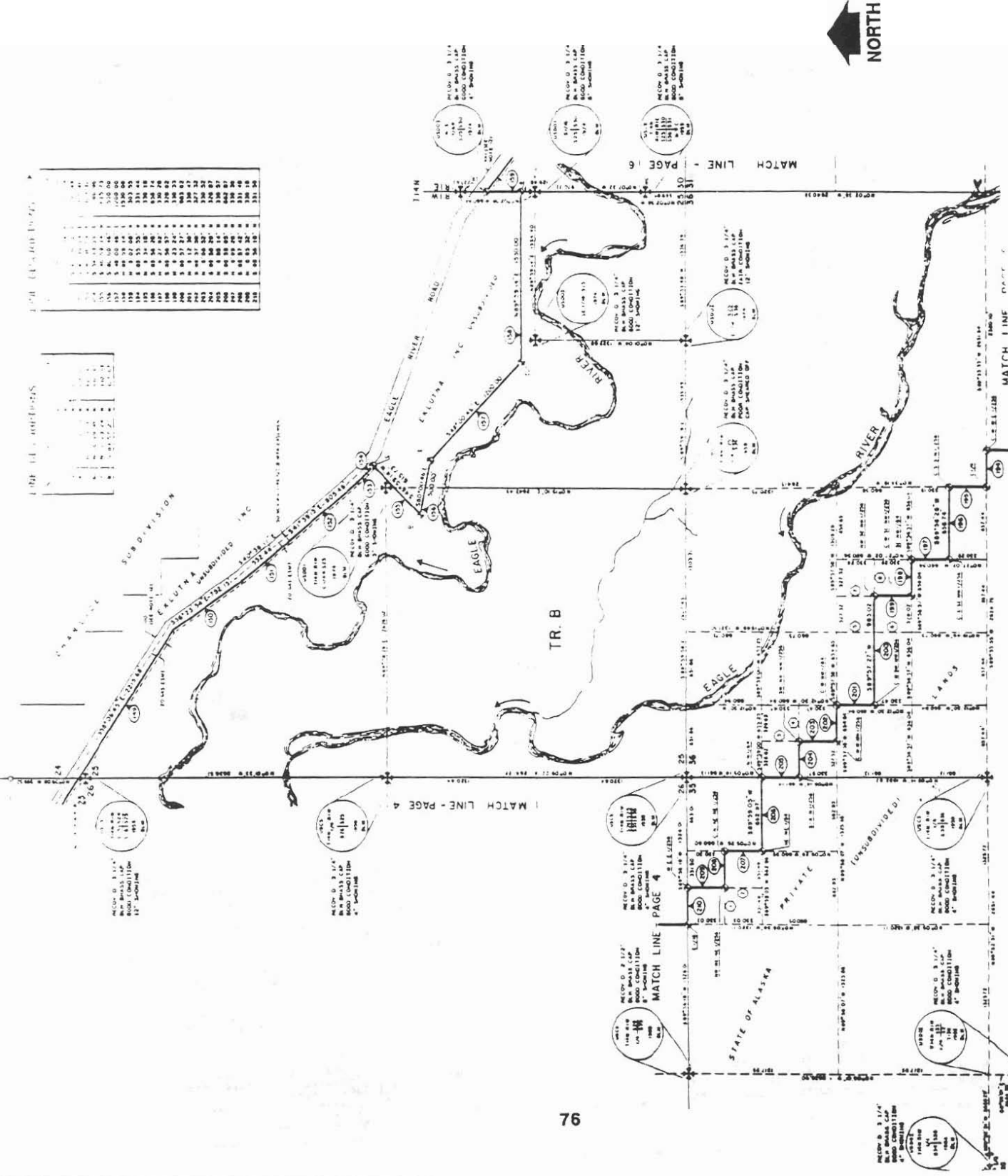


Figure 23.

THE FOLLOWING ARE THE ELEVATIONS:

STATION	ELEVATION
1	121.2
2	121.1
3	121.0
4	120.9
5	120.8
6	120.7
7	120.6
8	120.5
9	120.4
10	120.3
11	120.2
12	120.1
13	120.0
14	119.9
15	119.8
16	119.7
17	119.6
18	119.5
19	119.4
20	119.3
21	119.2
22	119.1
23	119.0
24	118.9
25	118.8
26	118.7
27	118.6
28	118.5
29	118.4
30	118.3
31	118.2
32	118.1
33	118.0
34	117.9
35	117.8
36	117.7
37	117.6
38	117.5
39	117.4
40	117.3
41	117.2
42	117.1
43	117.0
44	116.9
45	116.8
46	116.7
47	116.6
48	116.5
49	116.4
50	116.3
51	116.2
52	116.1
53	116.0
54	115.9
55	115.8
56	115.7
57	115.6
58	115.5
59	115.4
60	115.3
61	115.2
62	115.1
63	115.0
64	114.9
65	114.8
66	114.7
67	114.6
68	114.5
69	114.4
70	114.3
71	114.2
72	114.1
73	114.0
74	113.9
75	113.8
76	113.7
77	113.6
78	113.5
79	113.4
80	113.3
81	113.2
82	113.1
83	113.0
84	112.9
85	112.8
86	112.7
87	112.6
88	112.5
89	112.4
90	112.3
91	112.2
92	112.1
93	112.0
94	111.9
95	111.8
96	111.7
97	111.6
98	111.5
99	111.4
100	111.3



**SPECIAL NOTE A**  
 EAGLE RIVER WATERSHED TRACTS 1, 2, 3, 4, 5, 6, 7, 8, 9, 10, 11, 12, 13, 14, 15, 16, 17, 18, 19, 20, 21, 22, 23, 24, 25, 26, 27, 28, 29, 30, 31, 32, 33, 34, 35, 36, 37, 38, 39, 40, 41, 42, 43, 44, 45, 46, 47, 48, 49, 50, 51, 52, 53, 54, 55, 56, 57, 58, 59, 60, 61, 62, 63, 64, 65, 66, 67, 68, 69, 70, 71, 72, 73, 74, 75, 76, 77, 78, 79, 80, 81, 82, 83, 84, 85, 86, 87, 88, 89, 90, 91, 92, 93, 94, 95, 96, 97, 98, 99, 100. TOTAL AREA 3379.71 ACRES MORE OR LESS.

**SCALE**  
 0 100 200 300 400 500 600 700 800 900 1000

**DATE OF SURVEY**  
 August-October 1971

**NAME OF SURVEY**  
 EAGLE RIVER WATERSHED TRACTS 1-100

**STATE OF ALASKA**  
 DEPARTMENT OF NATURAL RESOURCES  
 DIVISION OF LAND & WATER

**EAGLE RIVER GREE**  
 ALASKA  
 STATE OF ALASKA ADL 222170 & SPI  
 LOCATED WITHIN T14N, R16E AND T41N  
 CONTAINING 3379.71 ACRES MORE  
 OR LESS.

**DRAWN BY**  
 [Signature]