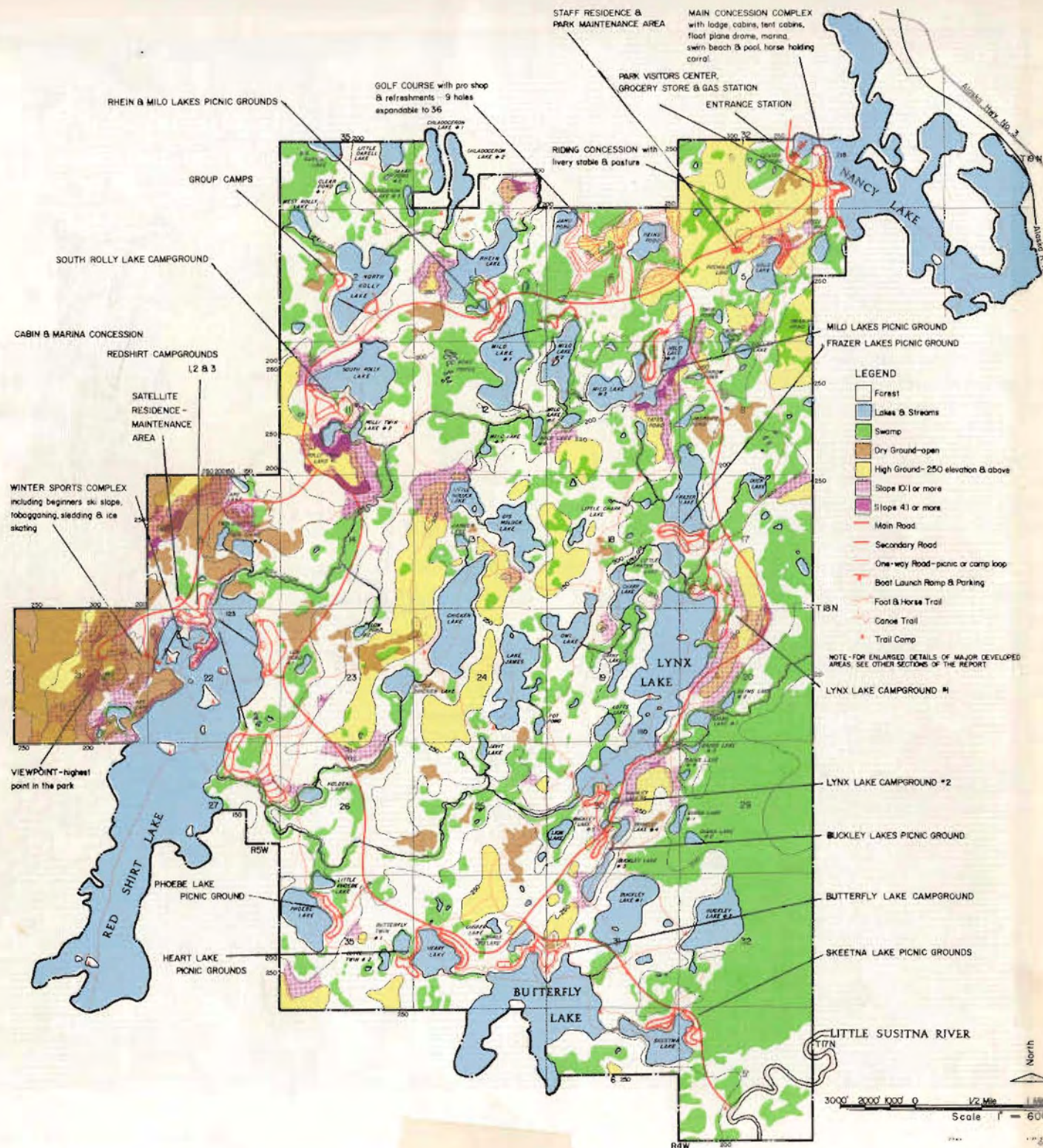


# PART ONE

## Master Plan



## Summary & Tabulation

### LAND\*

Gross area . . . . . 21,127 Acres  
 Water bodies not including streams . . . 24% -- 5,016  
 Wet land (swamp) . . . . . 20% -- 4,335  
 Hillside land too steep for development . . 6% -- 1,219

10,570

10,557 Net Useable Acres

Forested land. . . . . 10,576 Acres  
 Open, dry land. . . . . 1,200 Acres

### WATER

Number of water bodies. . . . . 131  
 Number 5 acres or less . . . . . 64  
 Gross area not including streams . . . . . 5,016 Acres

\*\* Fishery potential rated No. 1 -- 6 lakes . . . 2,254  
 Fishery potential rated No. 2 -- 6 lakes . . . 755  
 Fishery potential rated No. 3 -- 20 lakes . . . 902

3,911

Rated negligible as to fishery potential. . . . . 1,105  
 Streams -- 17 miles -- Little Susitna River (1 mile in park) and several other  
 streams rated No. 1 as to fishery potential. However most streams not assessed  
 as to potential.

### ROADS

Main Road. . . . . 16 miles  
 Red Shirt Complex-Viewpoint spur. . . . . 2.4 miles  
 Little Susitna River spur . . . . . 2.1 miles

20.5 miles

### TRAILS

Foot-horse (combined) . . . . . 25 miles  
 Canoe-maximum if all streams used. . . . . 17 miles

### CONCESSION FACILITIES

Lodge -- up to 160 units  
 Cabin areas -- 3 -- up to 140 units  
 Tent cabin area -- 1 -- up to 150 units  
 Riding concession with stable, corrals  
 Refreshment facilities  
 2 Marinas (in part)  
 Float Plane Drome (in part)  
 Grocery store  
 Gas Station  
 Winter Sports Complex (in part)

### CAMPGROUNDS

7 areas -- 1750 individual camp sites  
 Group camps -- 2 sites reserved

### PICNIC GROUNDS

7 areas -- 2900 individual picnic sites

### SPECIAL FACILITIES

Boat Launch Ramps and Parking -- 16  
 Canoe -- raft take-out -- Little Susitna River  
 Viewpoint  
 Golf Course  
 Trail camps -- number unlimited  
 Swim Beach  
 Winter Sports Complex  
 Marinas -- 2

### ADMINISTRATIVE, MAINTENANCE AND OPERATIONAL FACILITIES

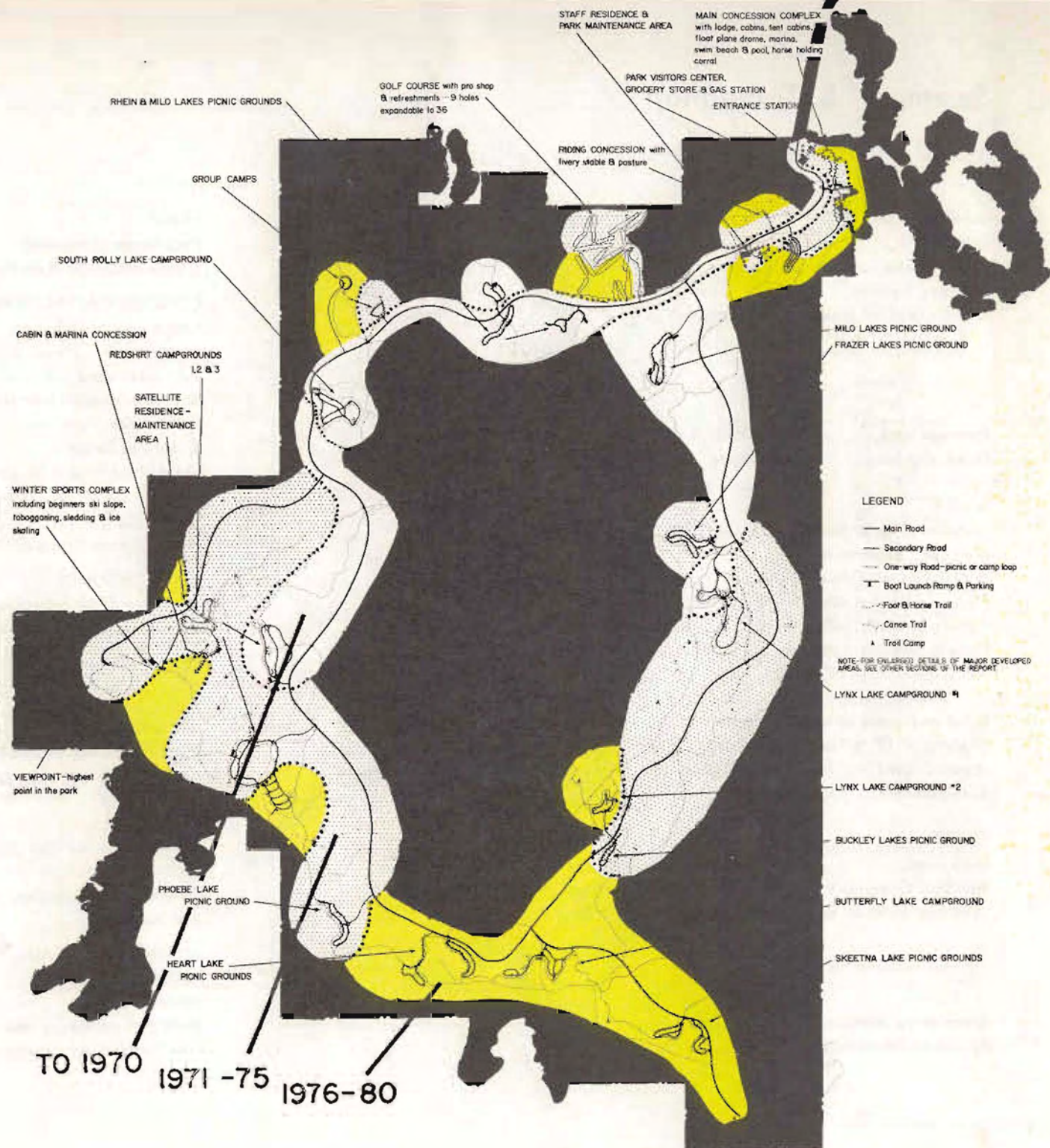
Entrance Station  
 Visitor's Center  
 Main staff residence and maintenance area  
 Satellite staff residence and maintenance area

\* Areas are planimetered, not calculated

\*\* By Alaska Department of Fish and Game



# Development Program



## Summary and Tabulation

Year	*Main Road (miles)	Cost	All Trail (miles)	Cost	Camp Ground (Units)	Cost	Picnic Ground (Units)	Cost	Other Facilities	Cost	Land Acquisition Total Cost	Annual Total	Five Year Totals (including annual construction cost increment)
1966 1967 1968	4.6	436,000	5.7	30,000	250	264,000	535	397,000	*1.4 miles main road access from Alaska Hwy. 3	163,000	26,000	1,316,000	
1969	2.4	238,000	5.7	30,000	240	249,000	200	168,000			16,000		
1970	2.0	194,000	5.7	30,000	155	195,000	285	241,000	1 staff residence and part of maintenance building	54,000		701,000	
1971 1975	7.0	659,000	11.4	60,000	555	577,000	980	722,000	225 units - lodge, cabins, tent cabins with restaurant and pool 50% each of 2 marinas Float plane drome and swim beach (50%) Riding concession, grocery store, 9 hole golf course, gas station and access roads for above facilities. Surfacing all roads constructed to date Entrance station, visitor's center, residence and maintenance building (in part) Group Camp - basic site development	1,758,000 47,000 27,000  511,000 767,000 139,000  21,000	291,000	714,000	2,752,000
1976 1980	4.4	407,000	11.4	60,000	550	553,000	900	644,000	Surfacing all roads constructed 1975-80 260 units - lodge, cabins, tent cabins 50% each of 2 marinas Float plane drome and swim beach (50%) Riding concession (50%) Golf Course - 9 holes Winter sports complex 3 staff residences, complete Maintenance Buildings Group Camp - basic site development	308,000 2,181,000 23,000 27,000 15,000 270,000 84,000  186,000 41,000	120,000		5,858,000
	20.5	1,934,000	40.0	210,000	1,750	1,838,000	2,900	2,172,000					5,411,000
*Includes Primary Electrical										6,622,000	453,000		

Grand Total 14,021,000